



MADANAPALLE INSTITUTE OF TECHNOLOGY & SCIENCE

DEPARTMENT OF CIVIL ENGINEERING

(UGC Autonomous Institution)

Affiliated to JNTUA, Ananthapuramu, Approved by AICTE, New Delhi

Accredited by NBA - Accredited with NAAC A+ Grade - NIRF Band 251-300 (Engg.)



Attainment of Batch 2020-24

Course	Name	PO1	PO2	PO3	PO4	PO5	PO6	PO7	PO8	PO9	PO10	PO11	PO12	PSO1	PSO2	PSO3
1	20CE101	Fundamentals of Engineering Mechanics	2.1	2.1	2.15	2.24	1.36							2.1	1.4	
2	20CE102	Mechanics of Fluids	2.07	1.65	0.83		1.86							2.07	0.83	1.38
3	20CE103	Surveying	2.3	1.88		2.48	2.3		1.57		1.56				2.3	
4	20CE104	Environmental Engineering	2.55	2.35	1.91	2.35	1.84	2.76	2.55			3		2.55	1.7	0.85
5	20CE105	Engineering Hydrology	2.3	2.3	1.5	1.78	1.97							2.3	1.27	
6	20CE106	Concrete Technology	2.23	2.04	1.7	2.23	2.04						1.68	2.23	1.49	
7	20CE107	Strength of Materials	2.52	2.52	3	2.23	2.2							2.52		
8	20CE108	Structural Analysis	1.98	1.98	2.2									1.98		
9	20CE109	Irrigation Engineering	2.23	2.23	1.49	2.23	1.04		2.2				1.49	2.23	1.49	1.49
10	20CE110	Design of Concrete Structures	1.98	1.98	1.98	1.98	1.31		1.98					1.84	1.47	
11	20CE111	Geotechnical Engineering	1.24	1.24	1.4	1.24	1.4							1.35	1.4	
12	20CE112	Transportation Engineering	1.69	1.34	1.4			1.23				2.36		1.2	1.23	1.23
13	20CE113	Design of Steel Structures	2.39	2.39	2.39	2.39			2.39					2.28	1.59	1.79
14	20CE201	Construction Technology Laboratory				3	3				2				3	2
15	20CE202	Surveying Laboratory				3	3				3				3	2
16	20CE203	Mechanics of Fluids Laboratory				3	3		2		3				3	2
17	20CE204	Advanced Surveying Laboratory				3	3				3				3	2
18	20CE205	Strength of Materials Laboratory		3		3	3								3	2
19	20CE206	Environmental Engineering Laboratory		3		3		3	3		1				3	2
20	20CE207	Concrete Technology Laboratory		3		3	3				1				3	2
21	20CE208	Advanced Civil Engineering Laboratory	2			3	3	1					3		3	2
22	20CE209	Geotechnical Engineering Laboratory	2			3	2	1					3		3	2
23	20CE210	Design Laboratory	3	2.6	3	2.2	3				2.4	2		2.2	3	
24	20CE211	Transportation Engineering Laboratory		3		3	3	3	2		3				3	2
25	20CE402	Construction Planning and Management	3	2	2.5	2	1.67	1.75	2.5	1.5		2.5	3	2.67	1.5	2
26	20CE405	Air Pollution and Solid Waste Management	2.74	2.67	2.02	2.54	2.04	3	2.74				3	2.74	2.74	0.91
27	20CE411	Environmental Impact Assessment	3	3		3	3	3	3	3	3	2.2			2	
28	20CE415	Estimating and Costing	2.74	2.74		2.79				1.79		1.97		1.83	1.83	1.83
29	20CE423	Pavement Design and Analysis	2.52	2.71	2.29	2.71	2.84	2		2.84			2.39	1.81		
30	20CE4M10	Safety in Construction	3			3	3	3	3	3			3	2	3	3
31	20CE602	Architecture (SOC-II)	2.94	2.94	2.94				2.26				1.96	2.94	2	
32	20CE603	Geospatial Data Analysis with QGIS (SOC-III)		2.89	3	2.94	3					3			2	1.94
33	20CE606	Python in Civil Engineering (SOC-IV)		3		3	3						3		2	2.8
34	20CE608	Revit Architecture (SOC-V)		2.81	2.81		2.81								0.94	2.21



MADANAPALLE INSTITUTE OF TECHNOLOGY & SCIENCE

DEPARTMENT OF CIVIL ENGINEERING

(UGC Autonomous Institution)

Affiliated to JNTUA, Ananthapuramu, Approved by AICTE, New Delhi

Accredited by NBA - Accredited with NAAC A+ Grade - NIRF Band 251-300 (Engg.)

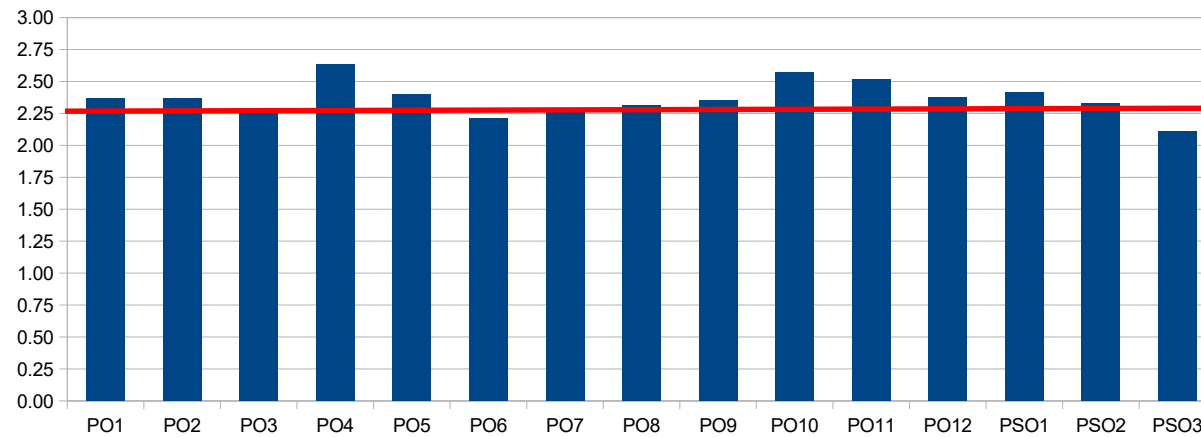


35	20CE701	Summer Internship I	2	1		1.5	3	1.5	1	2	3	2.67	2		2	1.5	2.4
36	20CE702	Summer Internship II	1.33	2.5		2.33	2.5	1	1	1.75		2	1.33		3	2.5	2.33
37	20CE703	Internship and Project Work		3	3	3	2.75	3		2	3	3	2	3	3	3	3
38	20ENG601	Corporate Communication Laboratory (SOC-I)									1.96	2.94		2.94			
39	20HUM101	Economics and Financial Accounting for Engineers					2.41	2.52	2.68		0.92	2.36	2.04				
40	20MAT103	Numerical Methods	1.88	1.88		1.88	1.25										
41	20MAT104	Probability and Statistics for Engineers	2.17	2.17													
Overall Direct Attainment			2.29	2.37	2.18	2.55	2.41	2.18	2.25	2.23	2.27	2.54	2.39	2.39	2.27	2.16	1.97

Graduate Exit Survey	2	2	2	3	2	2	3	2	3	3	3	3	2	3	3	3	3
Employer Survey	3	3	3	3	3	2	2	3	2	3	2	3	3	3	3	3	3
Alumni Survey	3	2	3	3	2	3	2	3	3	3	3	3	2	3	3	3	2
Overall Indirect Attainment	2.67	2.33	2.67	3.00	2.33	2.33	2.33	2.67	2.67	2.67	3.00	2.33	3.00	3.00	3.00	3.00	2.67

Overall Direct Attainment	2.29	2.37	2.18	2.55	2.41	2.18	2.25	2.23	2.27	2.54	2.39	2.39	2.27	2.16	1.97
Overall Indirect Attainment	2.67	2.33	2.67	3.00	2.33	2.33	2.33	2.67	2.67	2.67	3.00	2.33	3.00	3.00	2.67
Overall Attainment	2.37	2.36	2.27	2.64	2.40	2.21	2.27	2.31	2.35	2.57	2.51	2.38	2.41	2.33	2.11

B.Tech. in Civil Engineering 2020-24 Batch Overall PO & PSO Attainment



In-Charge

HOD



MADANAPALLE INSTITUTE OF TECHNOLOGY & SCIENCE

DEPARTMENT OF CIVIL ENGINEERING

(UGC Autonomous Institution)

Affiliated to JNTUA, Ananthapuramu, Approved by AICTE, New Delhi

Accredited by NBA - Accredited with NAAC A+ Grade - NIRF Band 251-300 (Engg.)



Sl	Course Code and Name	% Direct attainment					% Indirect attainment					Overall CO Attainment					
		CO1	CO2	CO3	CO4	CO5	CO1	CO2	CO3	CO4	CO5	CO1	CO2	CO3	CO4	CO5	
31	20CE602 Architecture (SOC-II)	3.00	3.00	3.00	3.00	2.60	3.00	3.00	3.00	3.00	3.00	3.00	3.00	3.00	3.00	3.00	2.68
32	20CE603 Geospatial Data Analysis with QGIS (SOC-III)	3.00	3.00	3.00	3.00	2.60	3.00	3.00	3.00	3.00	3.00	3.00	3.00	3.00	3.00	3.00	2.68
33	20CE606 Python in Civil Engineering (SOC-IV)	3.00	3.00	3.00	3.00	3.00	3.00	3.00	3.00	3.00	3.00	3.00	3.00	3.00	3.00	3.00	3.00
34	20CE608 Revit Architecture (SOC-V)	3.00	3.00	3.00	3.00	1.80	3.00	3.00	3.00	3.00	3.00	3.00	3.00	3.00	3.00	3.00	2.04
35	20CE701 Summer Internship I	3.00	3.00	3.00	3.00	3.00	3.00	3.00	3.00	3.00	3.00	3.00	3.00	3.00	3.00	3.00	3.00
36	20CE702 Summer Internship II	3.00	3.00	3.00	3.00	3.00	3.00	3.00	3.00	3.00	3.00	3.00	3.00	3.00	3.00	3.00	3.00
37	20CE703 Internship and Project Work	3.00	3.00	3.00	3.00	3.00	3.00	3.00	3.00	3.00	3.00	3.00	3.00	3.00	3.00	3.00	3.00
38	20ENG601 Corporate Communication Laboratory (SOC-I)	3.00	3.00	3.00	3.00	2.60	3.00	3.00	3.00	3.00	3.00	3.00	3.00	3.00	3.00	3.00	2.68
39	20HUM101 Economics and Financial Accounting for Engineers	3.00	1.80	2.60	2.40	0.40	3.00	3.00	3.00	3.00	3.00	3.00	2.04	2.68	2.52	0.92	
40	20MAT103 Numerical Methods	1.20	2.40	0.80	1.20	2.40	3.00	3.00	3.00	3.00	3.00	1.56	2.52	1.24	1.56	2.52	
41	20MAT104 Probability and Statistics for Engineers	2.60	1.20	1.40	2.40	2.20	3.00	3.00	3.00	3.00	3.00	2.68	1.56	1.72	2.52	2.36	

In-Charge

HOD